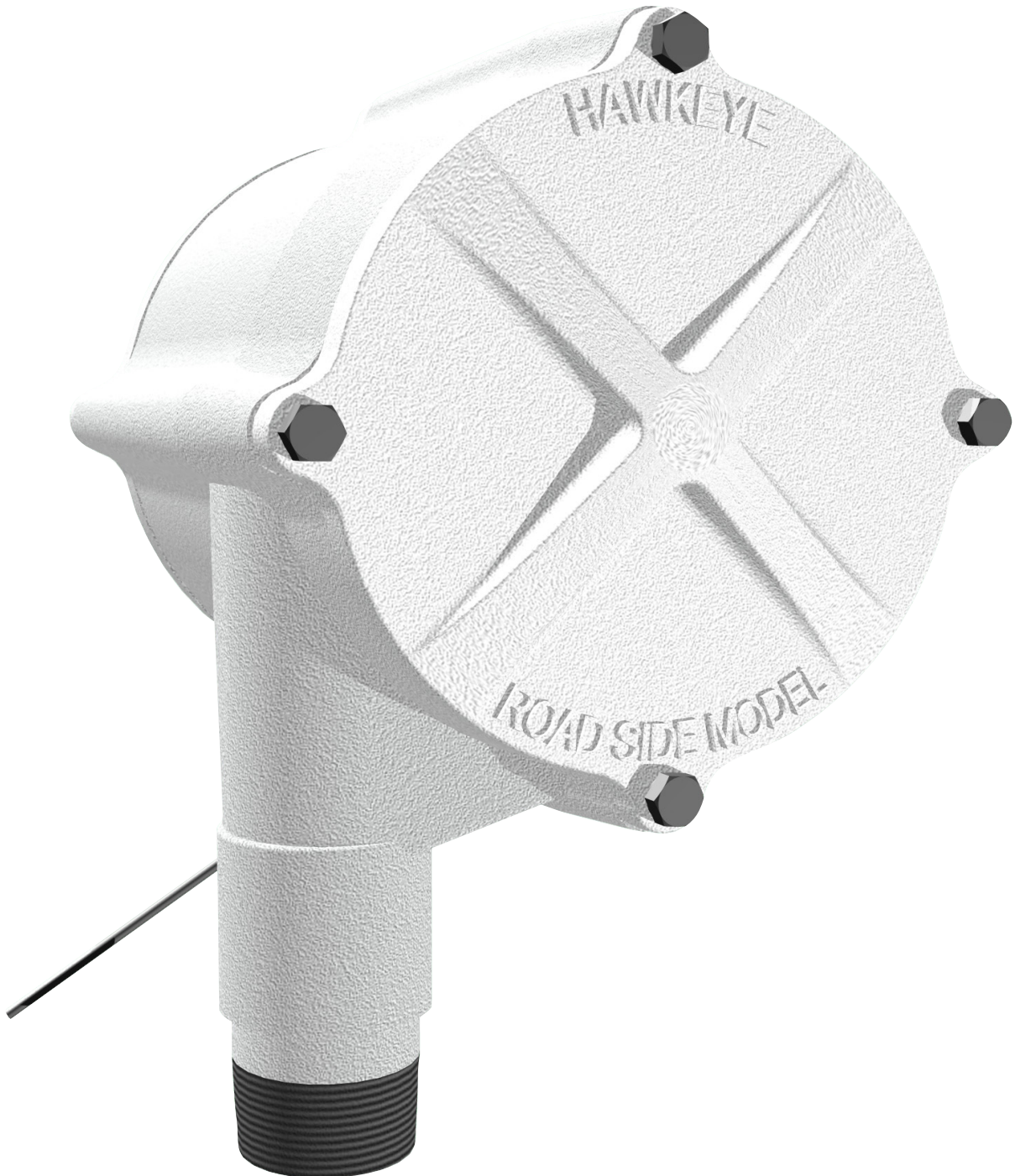


LEVEL INDICATION | DRY-SEAL ZERO EMISSION GAUGE HEADS

ROADSIDE HAWK GAUGE HEAD



Features

- Dry-Seal, Zero Emission Design
- Minimal maintenance required
- Compact Design, suitable for higher pressure operation
- Compatible with Goshawk Level Transmitter
- Freeze-resistant

FEATURES

Compartmentalized

- The gauge head is split into two separate compartments: the *sealed side* and the *open side*.
- The *sealed side* is exposed to the tank; the *open side* exposed to atmosphere.
- Sealed side features integral sloped channel, allowing condensation to drain freely back into the tank.
- Compartments are only mechanically connected by the bearing-supported axle, and sealed by the unique *Dual Dry Seal*.

Dual Dry Seal

- Dual dynamic FKM (Viton) seals the compartment from each other and prevents emission from the tank escaping from the gauge head.
- Dry-Seal technology requires no addition of grease or other sealing agents for long-term reliable operation.

Compact, Indexed Cable Reels

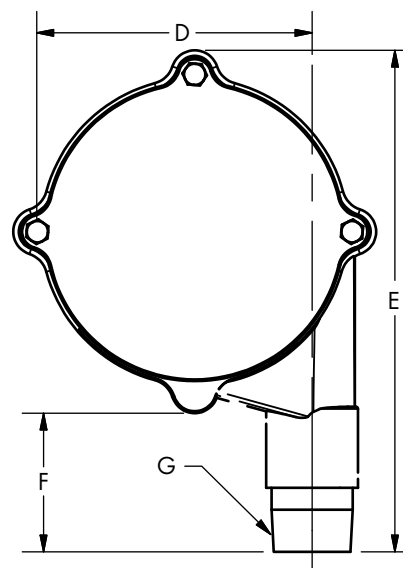
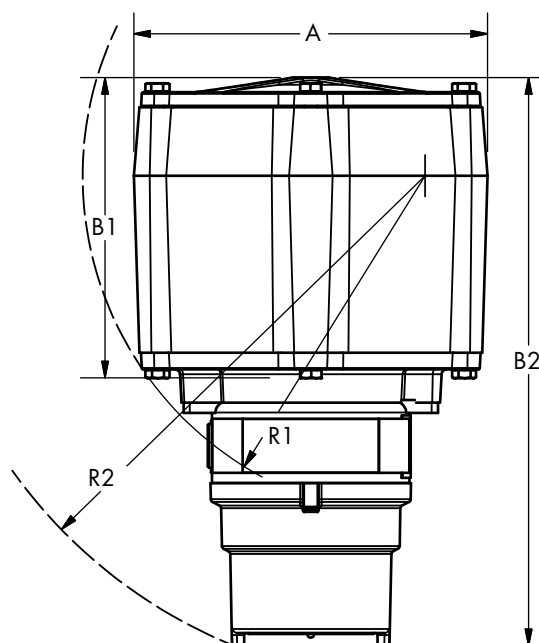
- Cable is wound on two reels, one in each compartment.
- Compact Cable Reels reduce gauge head size, allow for higher pressure operation.
- Reels are connected mechanically via a keyed common axle.
- Reels provide accurate cable indexing with none of the slip associated with pulley systems.
- Indexed reels allow the use of the bolt-on Goshawk Level Transmitter.

OPERATING SPECIFICATIONS

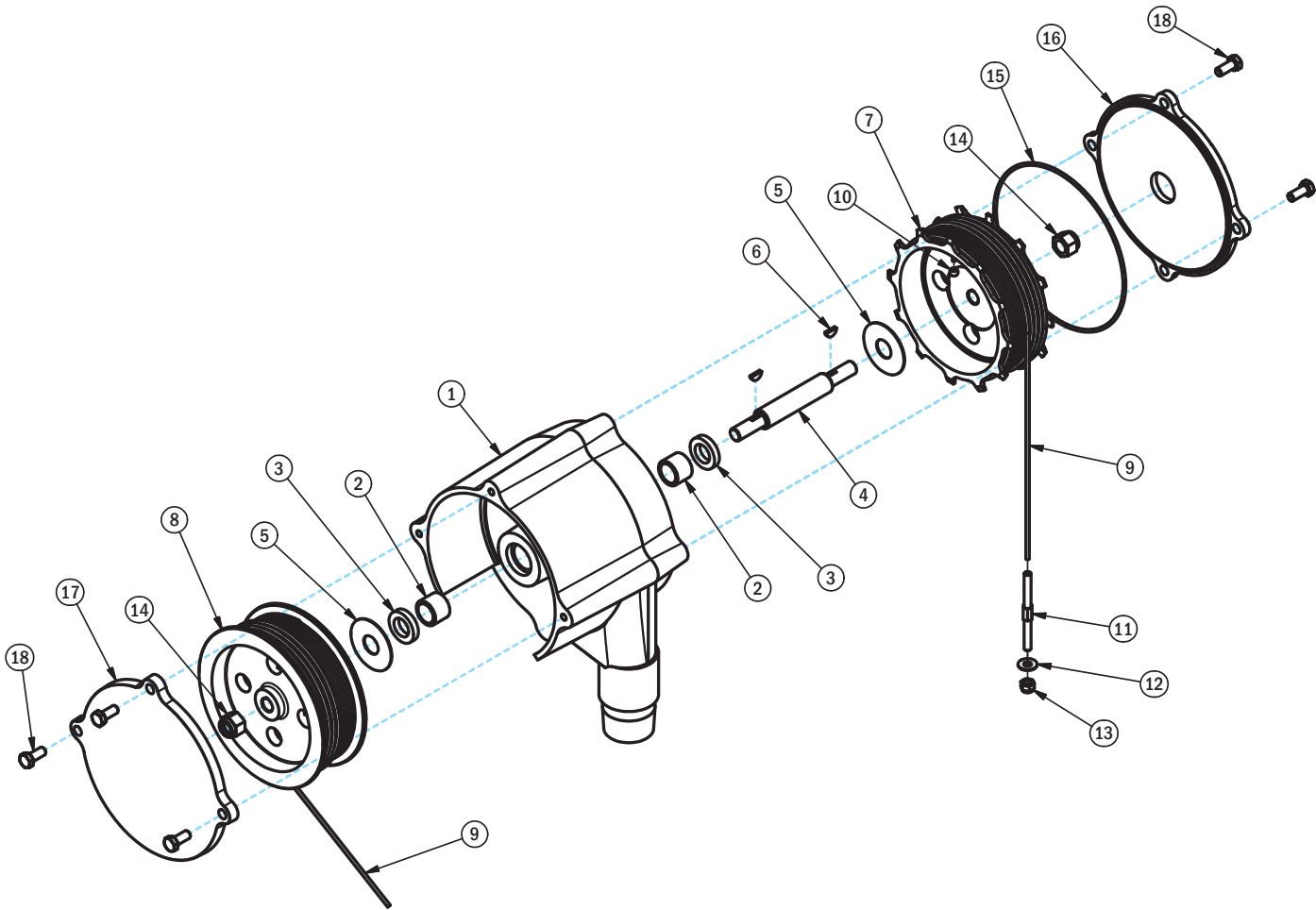
Measuring Principle	Mechanical (Float)	
Maximum Range	6 m [20 ft]	
Local Display	Tank Mounted Gauge Board & Indicator	
Process Connection	1-1/2 MNPT	
Process Temperature	- 40 °C to 60°C (w/ LLDPE Float)	
Ambient Temperature	- 40 °C to 70°C (w/ LLDPE Float)	
Operating Pressure	1 bar [14.5 psi]	
With Optional Goshawk Level Transmitter:		
Maximum Range	3.4 m [11 ft]	(Goshawk I)
	5.5 m [18 ft]	(Goshawk II)
	6.0 m [20 ft]	(Goshawk III)
Power Supply	13 - 24 VDC	
Output	4 - 20 mA	
HazLoc	CSA Cl. I Div. 1 Gr. C&D	

DIMENSIONS

	Dimension	Roadside Hawk	Roadside Hawk with Goshawk
A	Overall Width	8.5	8.5
B1	Overall Depth	7.2	-
B2	Overall Depth with Transmitter	-	13.6
D	Connection C/L to front	6.5	6.5
E	Overall Height	11.8	11.8
F	Clearance Under	3.3	3.3
G	Connection Size	1-1/2 MNPT	1-1/2 MNPT
R1	Turn-on Radius	8.2	
R2	Turn-on Radius w/ Transmitter		12.2
W	Weight	16 lb	20 lb



PARTS LIST & MATERIALS OF CONSTRUCTION



Item	P/N	Part Name	Material	Item	P/N	Part Name	Material
1	RS-1000	Body	Cast Aluminum (Polyester Coated)	11	10-1007	Cable Stud	316 SS
2	10-1081	Axle Bearing	HS Steel	12	HW-1073	Stud Washer	316 SS
3	10-1071	Oil Seal	FKM (Viton)	13	HW-1078	Stud Nut	316 SS, Nylon Insert
4	RS-1003	Axle	316 SS	14	HW-1002	Axel Nut	316 SS, Nylon Insert
5	10-1005	Washer	Nylon	15	RS-1006	O-Ring	FKM (Viton)
6	10-1001-S	Axel Key	316 SS	16	RS-1025	Cover Plate, Pressure Side	Cast Aluminum (Polyester Coated)
7	RS-1001	Reel - Pressure Side	Cast Aluminum	17	RS-1024	Cpver Plate, Open Side	Cast Aluminum (Polyester Coated)
8	RS-1002	Reel - Open Side	Cast Aluminum	18	HW-1003	Cover Plate Bolt	316 SS
9	10-1006	Reel Cable	316 SS				
10	10-1075	Cable Retaining Ball	316 SS				

TESTING

Every Roadside Hawk Gauge Head is tested with air to 1.5x maximum allowable operating pressure, marked with the *PASS* sticker (shown) and boxed, ready for shipment.



PACKAGING

Roadside Hawk Gauge Heads are shipped ready to install with cable terminations in place. Gauge Heads are boxed individually and include installation instructions. Package dimensions are 12.25" x 9.25" x 8" with shipping weight of 17 lb.

SYSTEM INFORMATION

The Roadside Hawk Gauge Head forms the core of a complete premium level indication system. To take advantage of the full value of a Level Indication system, be sure to specify a complete Roadside Hawk Level Indication System with components that are designed and engineered to work together.

A complete system includes:

- Roadside Hawk Gauge Head (Highlighted at right)
- Graduated Gauge Board, with volume in [m³]
- Top Roller Guide
- Freeze-resistant Indicator & Indicator Guides
- Horizontal Polyethylene Float (LLDPE)
- Float Guides

SYSTEM OPTIONS & ACCESSORIES

Goshawk Level Transmitter

The Roadside Hawk can support the Goshawk Level Transmitter, a bolt-on accessory that adds 4 - 20 mA 24VDC Level Output in addition to the mechanical gauge board display. See the Goshawk Transmitter brochure for more information.

Stainless Steel Float

Suitable for high-temperature applications.

Float Guide Anchor

To secure float guides when tank floor cannot be accessed or modified.

Gauge Board Mounting Clips

Weld-on or magnetic clips to secure gauge board to tank wall.

Level Switches

Electrical or Pneumatics Mechanical point switches.

ORDERING INFORMATION

Complete Roadside Hawk Level Indication System

1. Specify "Roadside Hawk Level Indication System"
2. Specify Tank Height, and Volume
3. Specify desired gauge board graduations (volumetric [m³] is standard)
4. Specify any options or accessories required.

Individual Roadside Hawk Gauge Head

1. Specify "Roadside Hawk Gauge Head"

