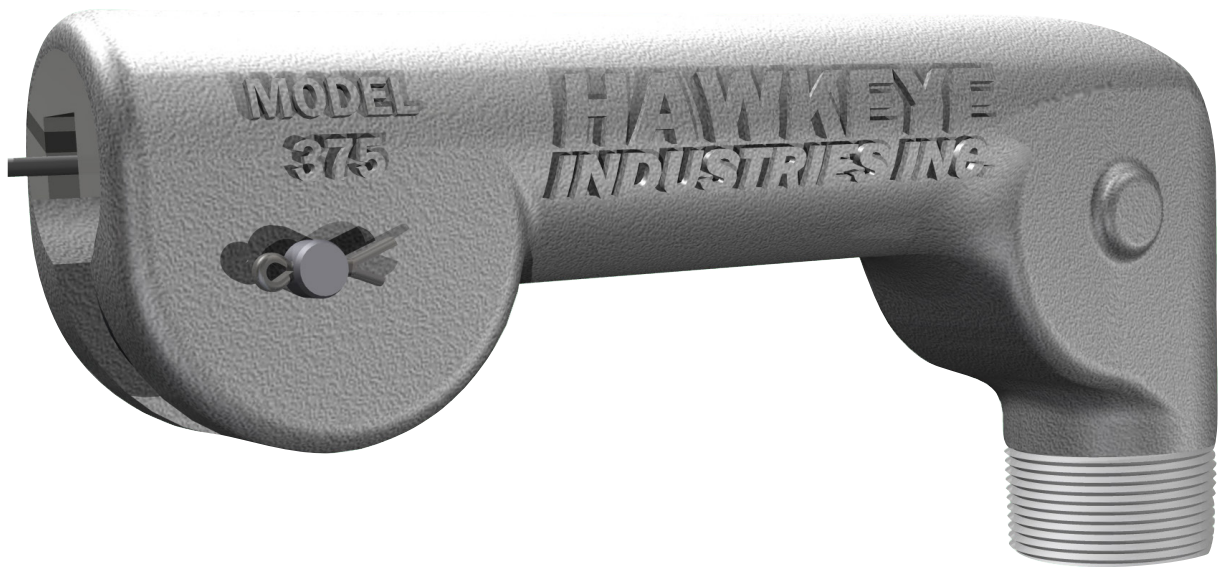


LEVEL INDICATION | LIQUID SEAL ZERO EMISSION GAUGE  
HEADS

## MODEL 375 LS GAUGE HEAD



### Features

- Low Profile, Compact Design ideal for Rental Tanks
- Patented Energised Liquid Seal
- Close Cable Tolerances for trouble-free operation
- Has both 1-1/2 MNPT and 3/4 FNPT Connections
- Comes complete with Hawkeye's Top Roller Guide

## FEATURES

### Low Profile

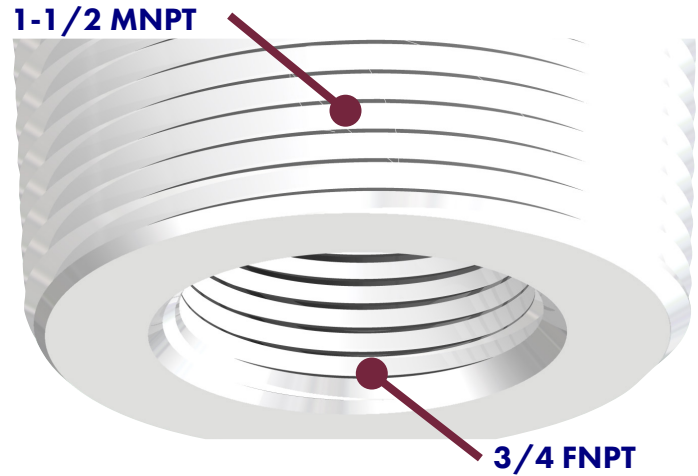
- Under 5" high when installed.
- Sites below most tank roof peaks.
- Reduces transport damage.

### Patented Energised Liquid Seal\*

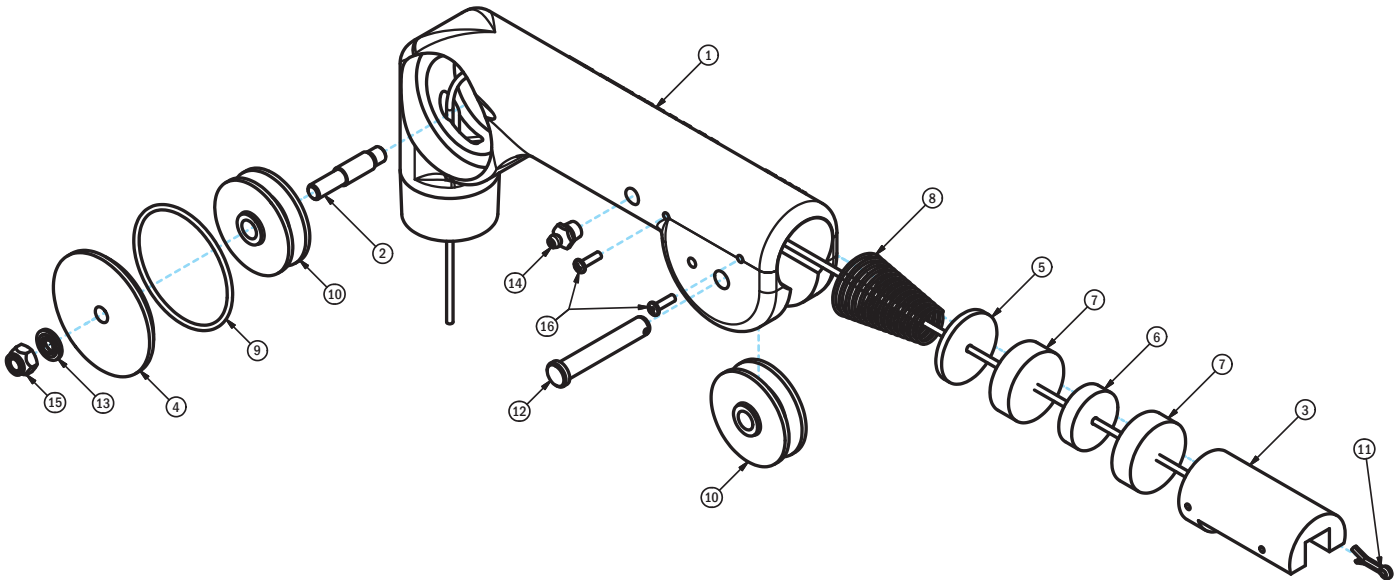
- Energised Liquid Seal cartridge fills the cable with sealing grease, denying even small amounts of gas to escape along with cable.
- Integrated seal and wiper design recovers grease from the cable, ensuring long periods between replenishment.
- Grease top-up easy with integrated 1/8" zerk.
- Maintains seal 5 - 10 times long than similar grease-seal competitors.
- US Patent 8,833,158, other patents pending

### Two Connections in One

- Gauge Head has both 1-1/2 male NPT connections for new build tanks, and 3/4 female NPT to retrofit on existing tanks.

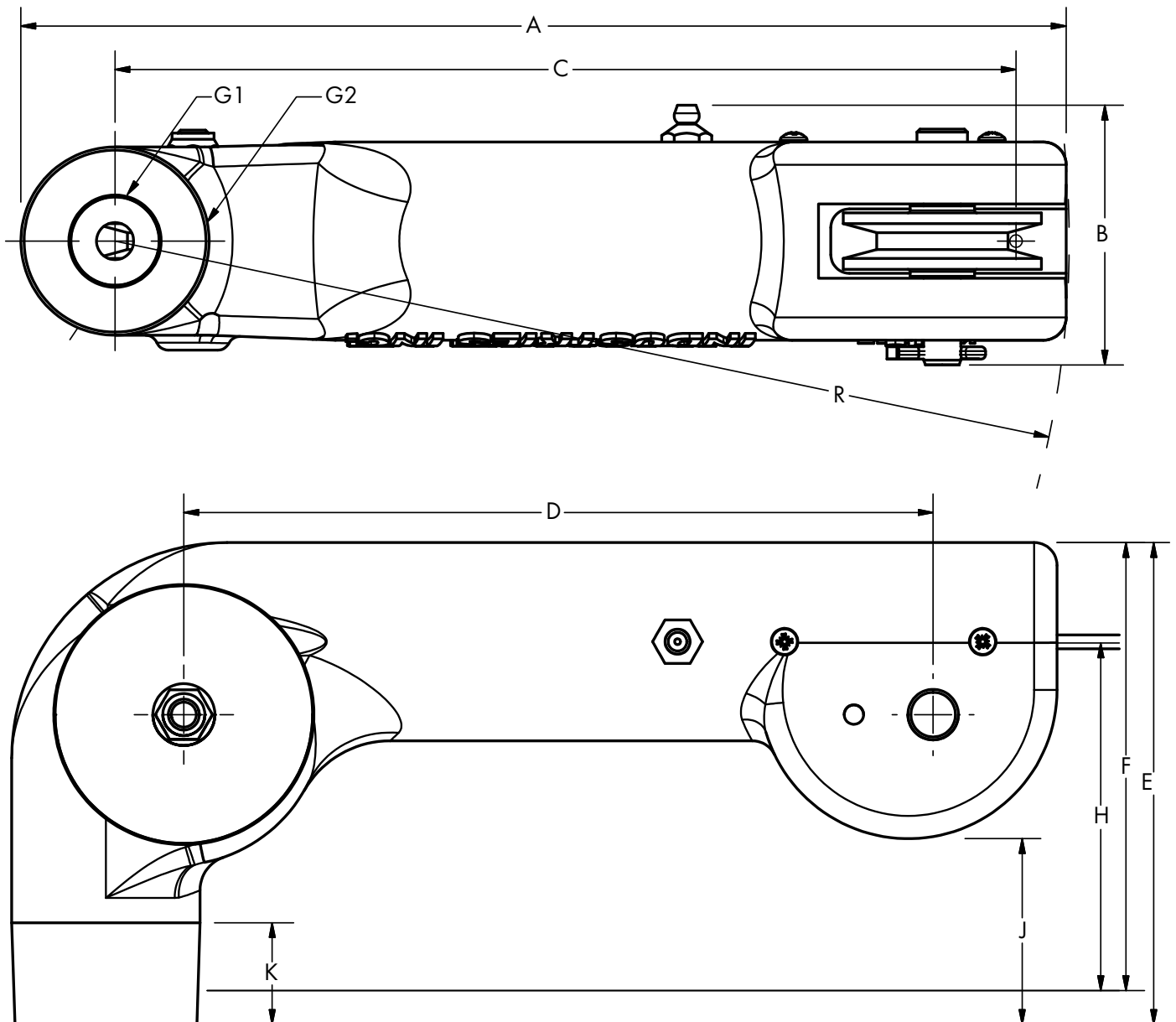


## PARTS LIST & MATERIALS OF CONSTRUCTION



Item	P/N	Part Name	Material	Item	P/N	Part Name	Material
1	SH2-375-LS-BODY	Body	Cast Aluminum	9	SH2-375-LS-70	Cover Seal	FKM (Viton)
2	SH2-375-LS-20	Pulley Axle, Sealed Side	AL6061	10	10-1014N	Pulley	Nylatron
3	SH2-375-LS-30	Pulley Guide / Cartridge Cap	Nylatron	11	HW-1130	Cotter Pin	316 SS
4	SH2-375-LS-45	Pressure Cover	Al6061	12	HW-1144	Clevis Pin	316 SS
5	SH2-750-LS-30	Gasket Retainer	Nylatron	13	HW-1145	Seal Washer	ZP CS, NBR (Buna) Insert
6	SH2-750-LS-40	Spacer	Nylatron	14	HW-2002	Grease Zerk	316SS
7	SH2-750-LS-50	Gasket	eFKM (Sponge Viton)	15	HW-1147	Lock Nut	316SS, Nylon Insert
8	SH2-750-LS-60	Energising Spring	302SS	16	HW-1146	Cartridge Screw	316 SS

## DIMENSIONS



Dimension	Model 375LS	Dimension	Model 375LS
A Overall Length	10.6	G1 Connection Size 1	3/4 FNPT
B Overall Width	2.6	G2 Connection Size 2	1-1/2 MNPT
C Cable Span	9.1	H Cable Exit Height	3.5
D Pulley Span	7.6	J Clearance	1.9
E Overall Height	3.9	K Thread Extent	1.0
F Handtight to top	4.5	Weight	3 lb

## OPERATING SPECIFICATIONS

Measuring Principle	Mechanical (Float)	Process Temperature	- 40 °C to 60°C (w/ LLDPE Float)
Maximum Range	24 m [ 80 ft]	Ambient Temperature	- 40 °C to 70°C (w/ LLDPE Float)
Local Display	Tank Mounted Gauge Board & Indicator	Operating Pressure	0.15 bar [2 psi]
Process Connection	1-1/2 MNPT and 3/4 FNPT		

## SYSTEM INFORMATION

The Model 375 LS Gauge Head forms the core of a complete level indication system. To take advantage of the full value of a Hawkeye Level Indication system, be sure to specify a complete Model 375 LS Level Indication System with components that are designed and engineered to work together.

### A complete system includes:

- Model 375 LS Gauge Head with Top Roller Guide (Highlighted at right)
- Graduated Gauge Board, with volume in [m<sup>3</sup>]
- Freeze-resistant Indicator & Indicator Guides
- Horizontal Polyethylene Float (LLDPE)
- Float Guides

## SYSTEM OPTIONS & ACCESSORIES

### Stainless Steel Float

Suitable for high-temperature applications.

### Float Guide Anchor

To secure float guides when tank floor cannot be accessed or modified.

### Gauge Board Mounting Clips

Weld-on or magnetic clips to secure gauge board to tank wall.

### Level Switches

Electrical or Pneumatics Mechanical point switches.

## ORDERING INFORMATION

### Complete Model 375 LS Level Indication System

1. Specify "Model 375 LS Level Indication System"
2. Specify Tank Height, and Volume
3. Specify desired gauge board graduations (volumetric [m<sup>3</sup>] is standard)
4. Specify any options or accessories required.

### Individual Model 375 LS Gauge Head

1. Specify "Model 375 LS Gauge Head"

