

Description

Frac Cups/ Packer Cups

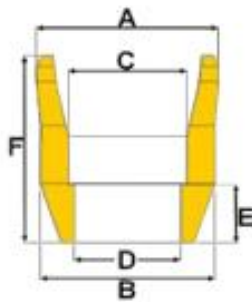
The industry leader in durability, The Yellow Cup packer element has practically eliminated the need for cup runs. The patented design also does away with the snag-prone wire cages of the old black rubber cups. When customers want to make sure their frac is done right the first time, they ask for The Yellow Cup.

Check below to see if we have your casing size available or contact us for Custom sizing

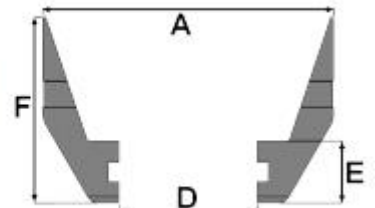
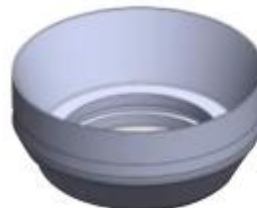


Drawings

Packer Cup



Retainer Thimble



Specifications

Size (In.)	Size (MM)	Part No.	#/FT	KG/M	A (In.)	B (In.)	C (In.)	D (In.)	E (In.)	F (In.)	Nominal ID	Casing Min. Draft
Cup												
4.5	114	45PC-A	9.5	14	4.140	3.950	2.730	2.424	1.375	4.440	4.090	3.965
4.5	114	45PC-C	10.5	15.5	4.091	3.88	2.688	2.424	1.375	4.440	4.052	3.922
4.5	114	45PC-B	11.6	17	4.040	3.810	2.705	2.424	1.375	4.440	4.000	3.875
4.5	114	45PC-D	13.5	20	4.020	3.725	2.660	2.424	1.375	4.440	3.920	3.795
4.5	114	4SSC-A	9.5	14	4.125	3.945	3.780	2.424	1.375	4.440	4.090	3.965
Retainer												
4.5	114	45CR-A	9.5-11.6	14-17	3.860	-	-	2.400	0.600	1.795	4.090	3.965
4.5	114	45CR-D	13.5	20	3.695	-	-	2.400	0.600	1.530	3.920	3.795
Cup												
5.5	140	55PC-A	14	20.8	5.085	4.910	3.330	2.905	1.375	5.035	5.012	4.877
5.5	140	55PC-B	15.5-17	23-25.3	5.060	4.750	3.340	2.905	1.375	5.035	4.950	4.767
5.5	140	55PC-c	20-23	30-34.2	4.817	4.525	3.330	2.905	1.375	5.035	4.778	4.545
Retainer												
5.5	140	55CR-A	14	20.8	4.773	-	-	2.900	0.600	2.600	5.012	4.877
5.5	140	55CR-B	15.5-17	23-25.3	4.715	-	-	2.900	0.600	2.550	4.950	4.767
5.5	140	55CR-C	20-23	30-34.2	4.500	-	-	2.900	0.600	2.400	4.778	4.545
Cup												
6.625	168.3	6.02	24-28	35.7-41.7	6.02	5.660	4.165	3.515	1.485	5.175	5.921	5.796
7	178	70PC	17-23	17-23	6.607	6.240	4.090	3.515	1.485	5.620	6.456	6.331
7	178	70PC-B	26-30	38-44	6.430	6.037	4.090	3.515	1.485	5.620	6.184	6.059
7	178	70PC-X	custom	custom	custom	custom	4.090	3.515	1.485	5.620	custom	custom
Retainer												
6.625	168.3	6.625CR-A	24-28	35.7-41.7	5.600	-	-	3.515	0.600	5.921	5.666	
7	178	70PC	17-23	25-34	5.88	-	-	3.520	0.600	6.538	6.241	