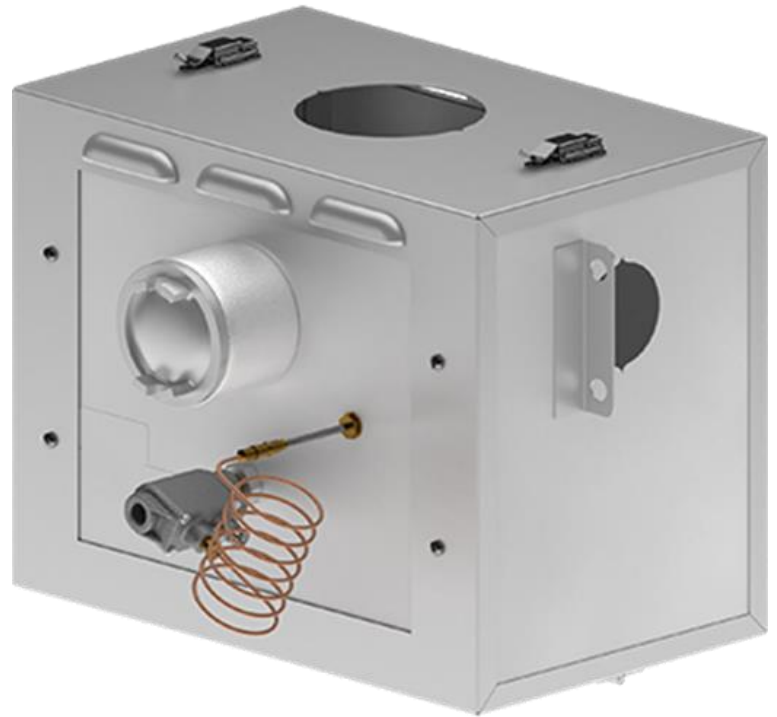


Catalytic Enclosure Heating Packages

Description

Enclosure Package for 2" NPT motor valves; w/ Shutoff Valve and Thermocouple

Enclosure Package to prevent freezing in variety of 2" NPT valves including Kimray and Norriseal. Single heater package with shutoff valve and thermocouple.



Specifications

Heater Size
BTU Rating
Starting Voltage
Starting Amps
Fuel Gas
Fuel Gas Consumption
Approximate Weight

10" x 12"
5,000 BTU/HR
12 Volts
8.3 Amps
Natural Gas
5.0 SCFH
18 lbs