

### Description

The standard Model B conveyor belt heater is normally used to treat material slide-back on conveyor belts over 42" wide and at speeds greater than 450 FMP, or where a Model A Conveyor Belt Heater unit is not applicable due to mounting limitations, or when the tail section is located in an enclosure containing coal dust or other flammable substances. This heater can be designed to treat virtually any size belt at any speed. The bottom of this heater is open to prevent material accumulation.

The Model B Conveyor Belt Heater to eliminate material slide back is available in different sizes for virtually any size belt running at any speed. This heater is installed under the belt as close to the material pickup point as possible. Considerations when selecting this model are – space available and spillage that may accumulate under the belt that may affect the operation of the heater and material being slung off idler rolls. Available in standard (shown) or remote models.



## Model B

### Durability

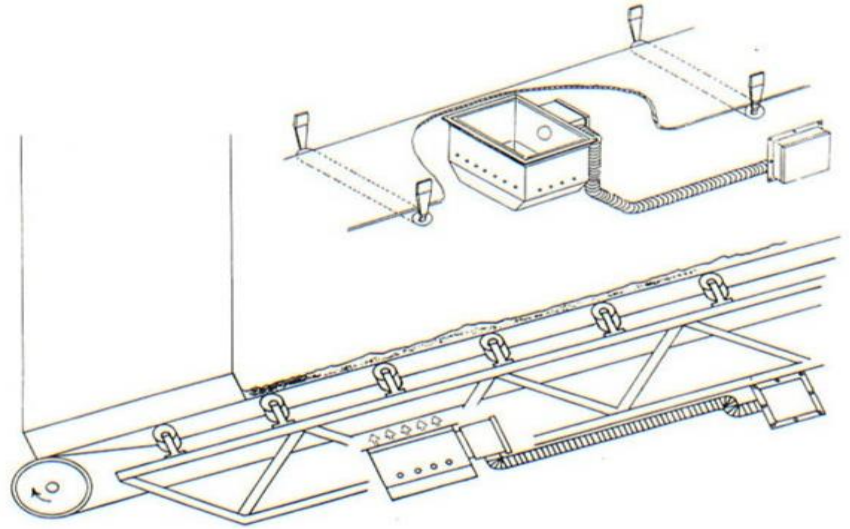
The Model B conveyor belt heaters are patented and are constructed from grade 309 and grade 304 stainless steel. They are sealed dust tight and not affected by the weather including rain, snow, ice, or moisture. They are designed to operate in a variety of conditions including dusty, dirty conditions by utilizing a remote air filtering system that can be located 40 feet or more from the installed unit.

### Safety

Our most important concern is the safe operation of the Model B Conveyor Belt Heater systems. Model B units are designed to stop operating any time that the belt even begins to slow down. UL and CSA approved burners and controls used in commercial / residential heating systems assures a safe operating system. Model B's open design does not collect spillage from the underside of the belt and the heaters do not retain heat after they stop. MSHA has test and endorsed the use of these systems.

**Economical Operation**

Our conveyor belt heaters are known throughout the industry for their superior economical operation. Model B Belt Heaters will completely eliminate downtime due to frost and ice build up or accumulation when they are properly specified, installed and operated. This claim is backed by our 100% satisfaction guarantee. A typical 56" belt running at 500 ft per minute that is experiencing material slide back can be treated with this system using approximately 2.5 gallons of diesel fuel or 3.75 gallons of propane per hour. Larger belts require more Model B Belt Heaters, smaller belts require less. Initial acquisition cost and minimal fuel consumption is typically a fraction of lost revenues due to downtime or labor and consumable costs incurred using alternative methods of de-icing.



**Dependability**

Model B Belt Heater systems typically will operate throughout the winter without any maintenance. Their use of stainless steel in the construction and burners and controls used in time tested home / commercial furnaces, as well as components used in get aircraft engines make for a lasting and dependable system.

**Material Slideback Model B**

