



**Standard Features**

**Heating Elements**

Alloy 800 (UNS08000) Sheath Material, Heavy Wall (.035 In.), Larger Diameter (.475" OD), Sealed Terminals

**Spacer /Support**

High Temperature Alloy Material, Rugged Design "Evenflow" Configuration

**Construction**

Welded Heating Elements, Welded Terminal Housing

**Service**

Wiring Modifiable in Field, Assembly repairable at Factory



**Optional Features**

**Terminal Housings**

ER- Explosion Resistant  
LT- Liquid Tight  
GP- General Purpose

**Flange Materials**

Carbon Steel, Low Temp Carbon Steel  
304SS (L/H), 316SS (L/H)  
Inconel 600 / 625, Alloy 800  
Hastelloy C, Others

**Sensors**

Type J,K,E Thermocouples  
100 Ohm RTD's  
Simplex or Duplex  
Optional Tube Wells

**Certifications**

CSA  
ATEX  
CRN  
UL  
IEC eX

**Applications**

60 and 45 Watts Per Square Inch  
For heating clean water only in commercial and/or residential applications.

30 and 35 Watts Per Square Inch  
For Fuel Gas, low temperature air and gas heating

23 and 20 Watts Per Square Inch  
For heat transfer oil, cleaners, high temperature air and gas heating.

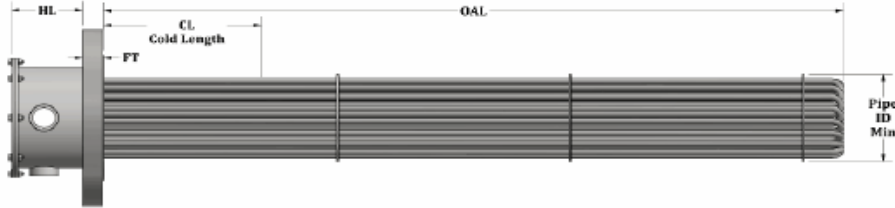
15 and 12 Watts Per Square Inch  
For lubricating oils, medium viscosity oils, high temperature air and gas heating.

8 and 6 Watts Per Square Inch  
For #5 and #6 fuel oil heating, viscous materials, raw crude oil, residual oils, high temperature air and gas heating.

4 and 2 Watts Per Square Inch  
For asphalt and other hard-to-heat substances, extra high temperature air and gas.



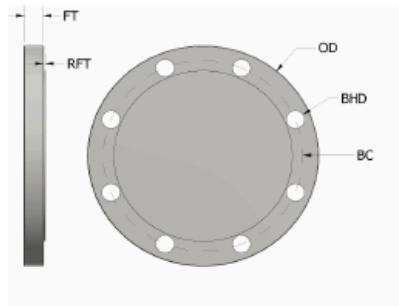
**Heater Dimensional Drawing Data**



**Housing Dimensions (HL)**

Diameter	GP	LT	ER	Atex/IEC ex
2.50	2.63	2.63	5.50	7.00
3.00	2.63	2.63	5.50	7.00
4.00	5.50	5.50	6.50	8.00
5.00	5.50	5.50	6.50	9.00
6.00	5.50	5.50	8.00	11.00
8.00	5.50	5.50	9.00	11.00
10.00	7.00	7.00	11.00	11.00
12.00	7.00	7.00	11.00	11.00
14.00	7.00	7.00	11.00	11.50
16.00	9.00	9.00	13.00	11.50
18.00	9.00	9.00	13.00	11.50
20.00	9.00	9.00	13.00	11.50
24.00	11.00	11.00	15.00	11.50

**Flange Dimensional Drawing Data**



Dia	OD	FT	RFT	BC	BHD	Q BH
2.50	7.00	0.81	0.06	5.50	0.75	4.00
3.00	7.50	0.88	0.06	6.00	0.75	4.00
4.00	9.00	0.88	0.06	7.50	0.75	8.00
5.00	10.00	0.88	0.06	8.50	0.88	8.00
6.00	11.00	0.94	0.06	9.50	0.88	8.00
8.00	13.50	1.06	0.06	11.75	0.88	8.00
10.00	16.00	1.13	0.06	14.25	1.00	12.00
12.00	19.00	1.19	0.06	17.00	1.00	12.00
14.00	21.00	1.31	0.06	18.75	1.13	12.00
16.00	23.50	1.38	0.06	21.25	1.13	16.00
18.00	25.00	1.50	0.06	22.75	1.25	16.00
20.00	27.50	1.63	0.06	25.00	1.25	20.00
24.00	32.00	1.81	0.06	29.50	1.38	20.00