



### Figure 100 Black Nut, Yellow Subs

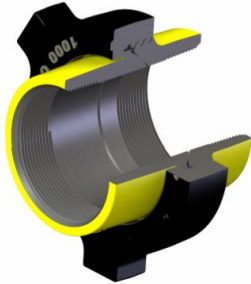


Figure 100- 1,000 psi NSCWP unions are available in 2"-8". Recommended for low-pressure manifolds and applications where working pressures do not exceed 1,000 psi. Figure 100 unions are made from tough, impact resistant/ ductile iron, with precisely manufactured ball cone (male to female) seats. This union is also available as a 16" butt-weld sch. 80.

### Figure 200 Blue Nut, Gray Subs

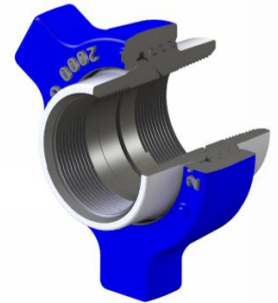


Figure 200-2,000 psi NSCWP unions are available in 1"-10". These unions are compact and popular for low pressure rig piping. They also meet most requirements in the medium pressure ranges for air, water, oil or gas service. Available in butt-weld sch. 40 and 80. Also available with stainless steel subs.

### Figure 206 Blue Nut, Gray Subs

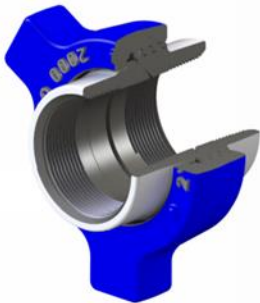


Figure 206-2,000 psi NSCWP unions are available in 1"-10". These unions are fitted with an o-ring in the male sub seating surface for enhanced sealing. Available in butt-weld sch. 40 and 80. Also available with stainless steel subs.

### Figure 207 Blue Cap, Gray Subs

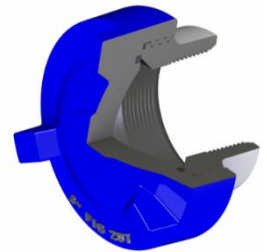


Figure 207-2,000 psi NSCWP unions are available in 3", 4" & 6". These unions are fitted with a nitrile o-ring in a blanking cap for effective closure. With the cap removed, the female sub will make up to hose, pipe or tubing fitted with a figure 200 or 206 male sub and nut. Recommended for air, water, oil or gas service. Available in butt-weld sch. 40 and 80.

### Figure 211 Gray Nut, Blue Subs

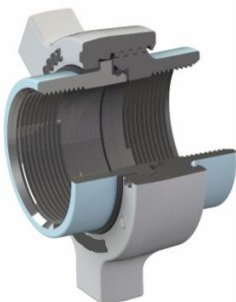


Figure 211-2,000 psi NSCWP insulating unions are available in 2" & 3" sizes. The insulated design eliminates metal to metal contact across the union, while dual abrasion resistant precision molded elastomers provide a positive seal. Recommended where electrolytic corrosion prevention is a problem, or to statically isolate sections of piping. Replacement seal kits are available to extend service of the union.

### Figure 300 Gray Nut, Yellow Subs



Figure 300-2,000 psi NSCWP unions are available in 1" & 2" sizes. These unions feature the effective and dependable "flat-face/ o-ring sealing design. They seal equally well in low- or high-pressure vapor or liquid service. The "flat-face" design also permits straight away lateral break-outs short rigid piping sections, without the need to spread the pipe.

### Figure 400 Black Nut, Red Subs

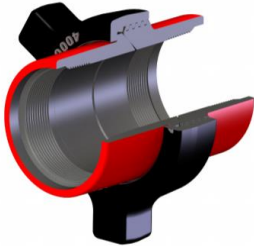


Figure 400- these unions are available in 2", 3" & 4" 4,000 psi and 5", 6" & 12" 2,500 psi NSCWP. All three parts are made from steel forgings with heavy walls and rugged design. They feature ball and cone sealing for easy alignment. (5" & above have a nitrile o-ring for additional sealing).

### Figure 600 Black Nut, Silver Subs

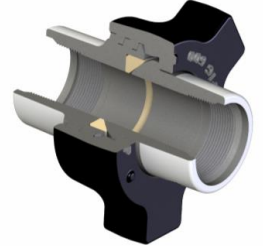


Figure 600-6,000 psi NSCWP unions are available in 1", 1-1/2", 2" & 4" sizes. These unions have a bronze seat insert to provide an additional hardness differential across the seats for enhanced sealing.

### Figure 602 Black Nut, Orange Subs

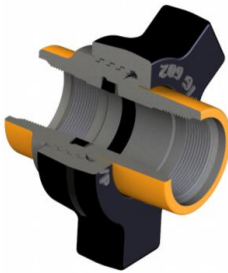


Figure 602-6,000 psi NSCWP unions are available in 1", 1-1/4", 1-1/2", 2", 3", 4", 5" and 6" sizes in standard or sour gas service. These unions feature a resilient nitrile seal ring that helps sealing and protects the steel-to-steel seating of the union. Recommended for manifold and truck-mounting where size and weight critical.

### Figure 1002 Red Nut, Blue Subs

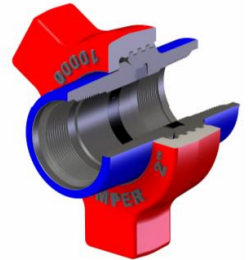
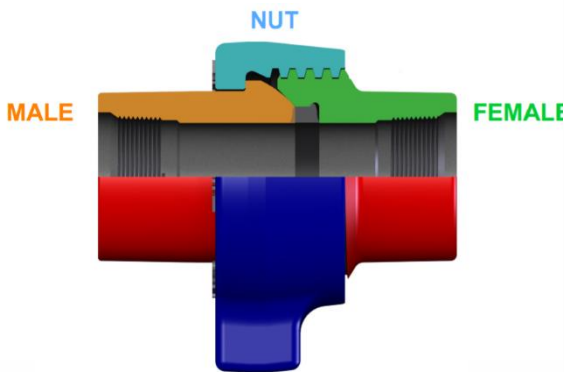


Figure 1002- these unions are available in 1" thru 4" 10,000 psi and 5" 7 6" 7,500 psi NSCWP. These unions also have a resilient nitrile seal ring (5" & 6" have nitrile o-ring). They are made from alloy steel and are used primarily by service companies in applications such as cementing, fracturing and acidizing. Designed for high-pressure systems, including truck-mounted systems, fig 1002 unions also are available for h2s service.

## Definitions



## Pipe End Connection Styles

(Available for both male & female subs)



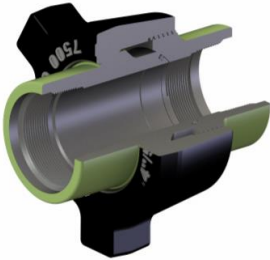
**THREADED**  
( LPT, NPT & 8 or 10 RND )



**BUTT-WELD**  
( SCH. 40, 80, 160 & XXH )

**Figure 1003 Black Nut, Green Subs**

Figure 1003- available in 3" rated at 10,000 psi and 4", 5" & 6" rated at 7,500 psi cwp. 3" and 4" are available in lpt threaded ends and all sizes in butt-weld sch. 160 or xxh. Recommended for air, water, oil, mud or gas service where alignment of piping is a problem. Especially suitable for high pressure manifolding and drilling rig use. These unions incorporate a ball seat that provides for 7-1/2° of misalignment or angular adjustment from center, for a total of 15° misalignment capability. In addition to the steel-to-steel seating of the union, a nitrile o-ring assures a pressure tight connection in any position of misalignment.



**Figure 1502 Blue Nut, Red Subs**

Figure 1502- these 15,000 psi NSCWP unions are available in 1", 1-1/2" 2", 3", 4" and 5" sizes, with a replaceable resilient nitrile seal ring. Alloy steel construction, heavy walls and rugged design have made these unions popular with the service companies for working pressures up to 15,000 psi. Fig 1502 unions also are available for sour gas services.

