

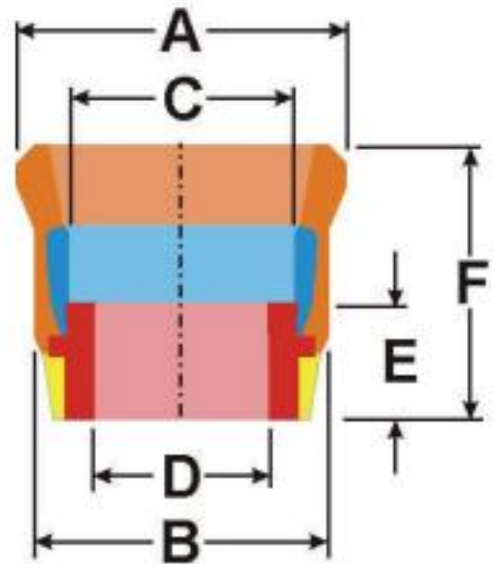
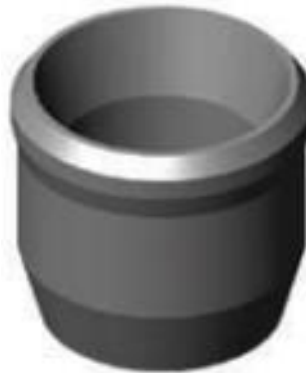
Description

Heavy Duty Packer Cups

3 1/2" – 7"

Material:

- HSN/ HNBR
- EPDM
- Viton
- Alfás
- Other available



Durometer: 60-90 Shore

Specifications

Size	WF/FT	Casing ID	A	B	C	D	E	F
3-1/2"	9.2-9.3#	2.99	3.05	2.94	2.28/ 2.30	1.93	1.32	2.25/ 3.60
	9.11-11.6#	4.090/4.000	4.13	3.85	2.67	2.41	1.5	4.31
4 1/2"	12.6-13.5#	3.958/3.920	4.08	3.74	2.74	2.41	1.5	4.34
	15-18#	4.408/4.276	4.62	4.16	2.73	2.41	1.5	4.25
5"	18-21#	4.276/4.126	4.43	4.11	2.7	2.41	1.5	4.25
	14-17#	5.012/4.892	5.2	4.75	3.42	2.91	1.48	4.95
5 1/2"	15-17#	4.950/4.891	5.12	4.82	3.42	2.91	1.41	4.95
	17-23#	4.892/4.670	4.98	4.55	3.38	2.91	1.56	5
	17-20#	4.892/4.778	5.09	4.65	3.42	2.91	1.53	4.95
5 3/4"	17-19#	5.190/5090	5.28	4.88	3.36	2.91	1.42	4.97

Size	WF/FT	Casing ID	A	B	C	D	E	F
7"	17-20#	6.538/6.456	6.62	6.23	4.08	3.53	1.53	5.64
	17-20#	6.538/6.456	6.62	6.23	4.08	2.91	1.53	5.64
	17/20#	6.538/6.456	6.62	6.23	4.08	4.031	1.53	5.64
	17/23#	6.538/6.366	6.62	6.23	4.08	2.91	1.53	5.64
	17-23#	6.538/6.366	6.62	6.23	4.08	3.53	1.63	5.7
	17/23#	6.538/6.366	6.62	6.23	4.08	4.031	1.53	5.64
	22-24#	6.398/6.366	6.59	6.19	4.1	2.91	1.5	5.56
	22-24#	6.398/6.366	6.59	6.19	4.1	3.53	1.5	5.56
	22-24#	6.398/6.366	6.59	6.19	4.1	4.031	1.5	5.56
	22-26#	6.398/6.276	6.46	6.15	4.08	2.91	1.5	5.7
	22-26#	6.398/6.276	6.46	6.15	4.08	4.031	1.5	5.7
	22-26#	6.398/6.276	6.46	6.15	4.08	3.53	1.5	5.7
	26-30#	6.276/6.154	6.38	6.01	4.13	2.91	1.57	5.7
	26-30#	6.276/6.154	6.38	6.01	4.13	3.53	1.57	5.7
	26-30#	6.276/6.154	6.38	6.01	4.13	4.031	1.57	5.7
	32#	6.094	6.2	5.88	4.43	2.91	1.44	5.74
	32#	6.094	6.2	5.88	4.43	3.53	1.44	5.74
	32#	6.094	6.2	5.88	4.43	4.031	1.44	5.74