



Designed in
Canada!

Rod Couplings

Using Canadian technology we are proud to offer our Canadian Designed Rod Couplings.

We can supply two types of couplings are available which meet API Class T and Class SM Specifications:

- Type T
- Sprayloy

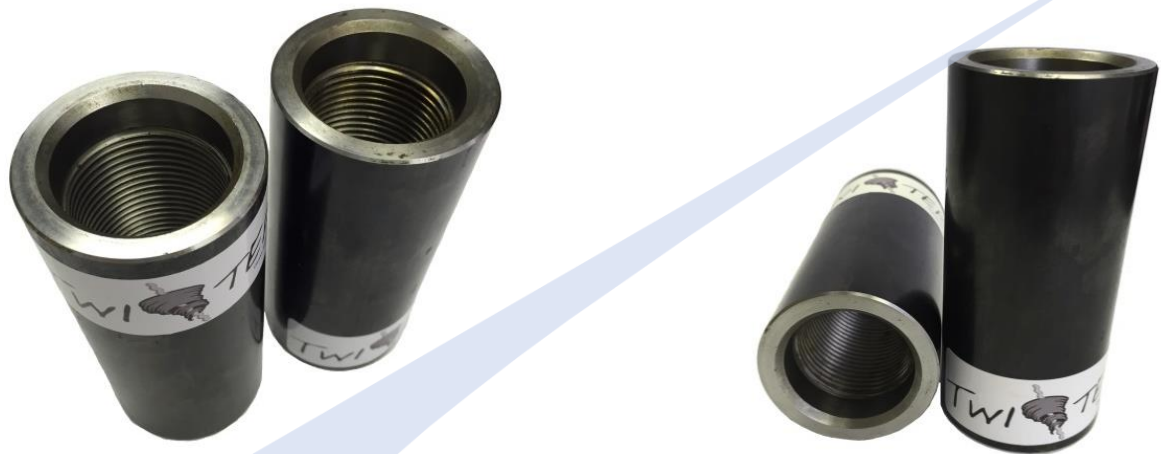
Type T sucker rod coupling blanks, of cold drawn seamless mechanical steel tubing, are formed to size with a material hardness of 56 to 62 HRA and magnetically inspected. Blanks are machined to coupling size and tolerance, threaded by cold forming, rolled thread tapped for thread strength and fatigue resistance, and black oxide coated for anti-galling and lubricating properties. Dimensions and tolerances conform to API Spec11B. Type T couplings are recommended for installations where abrasion or corrosion/abrasion are not a problem.

Sprayloy sucker rod couplings are manufactured from AISI Class A-8630 alloy special quality, cold drawn tubing. Sprayloy couplings are manufactured in their own dedicated line. Blanks are cleaned, prepared, loaded on mandrels, shot blasted, flame sprayed and induction fused. The complete flame spray process is a computer controlled, menu driven operation that holds spray application tolerances to within two thousandths of an inch. Sprayloy couplings are manufactured with a .010"/.015" (.254 mm/.381 mm) thick nickel-chromium coating on the O.D., and are recommended for abrasion and corrosion resistance.

Couplings are available in a variety of styles in most sucker rod sizes and combinations of sizes. Couplings are available in API full-size and slim hole. Oversize are available on request.

Polished rod couplings are available in box and box styles in all sucker rod sizes and combinations of sizes, and in fullsize and slim hole outside diameters.

Couplings are also available in Box x Pin or Pin x Pin connections as well to be used as sucker rod or sucker rod / rotor crossover couplings.



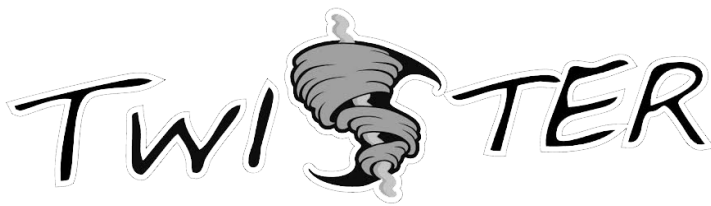
www.canamservices.com

245, 6025-12th Street SE, Calgary, AB, Canada T2H 2K1

E-mail: canam@canamservices.com

Tel: 1(403) 543-0350, Fax: 1(403) 543-0351





Designed in
Canada!

Rod Couplings

Coupling Specifications				
Chemical Properties,%		Mechanical Properties		
Carbon	.20/.33	Tensile Strength, ksi;	95 min. (655)	
Manganese	.70/.90	Yield Strength, ksi; (Mpa)	80/100 (522/689)	
Phosphorus	.03 Mx	Elongation, 2", %	16 min.	
Sulfur	.03 Mx	Reduction in Area, %	50 min.	
Silicon	.15/.30	Hardness Rockwell A	56/62	
Chromium	.40/.60			
Molybdenum	.15/.25			
Nickel	.40/.70			
Sprayloy Coating				
Chemical Properties,%		Coating Mechanical Properties		
Iron	4	Ground Smoothness, microinches	125 max.	
Chromium	14	Hardness, RC	56 min.	
Silicon	4.3			
Boron	3.1			
Nickel	Balance			
Rod Size IN. (mm)	Approx Wt LBS. (kg)	Slimhole OD IN. (mm)	Fullsize OD IN. (mm)	Oversize OD IN. (mm)
5/8 (15.88)	1.3 (.59)	1 1/4 (31.75)	1 1/2 (38.1)	---
3/4 (19.05)	1.4 (.64)	1 1/2 (38.10)	1 5/8 (41.28)	1 13/16 (46.04)
7/8 (22.23)	1.7 (.77)	1 5/8 (41.28)	1 13/16 (46.04)	2 (50.08)
1 (25.40)	2.7 (1.22)	2 (50.80)	2 3/16 (55.5)	2 3/8 (60.33)
1 1/8 (28.58)	3.4 (1.54)	---	2 3/8 (60.33)	---



www.canamservices.com

245, 6025-12th Street SE, Calgary, AB, Canada T2H 2K1

E-mail: canam@canamservices.com

Tel: 1(403) 543-0350, Fax: 1(403) 543-0351

